

**St. James Lutheran Church,  
Whyalla**

**Annual Report 2011**



## TABLE OF CONTENTS

<b>PASTOR</b>	<b>4</b>
<b>CHAIRMAN</b>	<b>5</b>
<b>FUTURE FOCUS GROUP</b>	<b>6</b>
<b>SPIRITUAL MINISTRY TEAM</b>	<b>7</b>
<b>WOMEN'S FELLOWSHIP</b>	<b>7</b>
<b>POSSUM POUCH GROUPS</b>	<b>8</b>
<b>CHRISTMAS PROGRAM</b>	<b>9</b>
<b>SHED MEN</b>	<b>9</b>
<b>DOMESTIC ENGINEERS</b>	<b>9</b>
<b>FAITH KERNEL EVENTS</b>	<b>10</b>
<b>SUPPORT GROUP</b>	<b>11</b>
<b>CHURCH CAMP</b>	<b>11</b>
<b>SUNDRY REPORTS</b>	<b>12</b>
<b>STATISTICS</b>	<b>13</b>
<b>2011 FINANCE</b>	<b>14</b>
<b>2011 AGM MINUTES</b>	<b>15</b>



## PASTOR

*1CO 9:19 "Though I am free and belong to no man, I make myself a slave to everyone, to win as many as possible. <sup>22</sup> To the weak I became weak, to win the weak. I have become all things to all men so that by all possible means I might save some. <sup>23</sup> I do all this for the sake of the gospel that I may share in its blessings."*

As this is my last AGM for St James congregation, I have chosen the Corinthians passage, not because I would claim to have done all the things that St Paul did, but it does represent the flavor of the ministry I have tried to do while in Whyalla. Some might say I tried in that vein too hard, or whatever and some of that might be right. But the text does describe the intent of what I have tried to achieve. By myself I would have achieved very little, but with the cooperation and initiative of many people, St James congregation is what it is today. I would have loved to do much more, but the pastor is but one person in a larger group, and it is the group that determines the rate of progress more than any one person, no matter who they are, pastor or parishioner.

### **Home Holy Communion.**

One of the many joys of being the pastor here has been taking part in the various groups within the congregation. One such group is the Home Holy Communion group where HC is taken to some of our members who have difficulty attending worship. With the assistance of Des, Anne and Jim we have monthly taken home communion to between 15 and 20 members. Some have passed on to the Lord's care during the year. It has been an absolute delight to spend the time with these people. It has also been a delight to work with the assistants, and their attitude and their actions are highly commendable. Well done. This is one quite practical way of "**loving and caring for all people**" that our mission statement encourages us to do.

**Chaplaincy** Just a reminder that I have been going to the University as a chaplain for one day a week in the school term.

**Worship:** I have been trying to provide a variety of worship experiences within a certain stability and pattern that respects our Lutheran and Christian traditions. Some of the variety has pleased some but maybe "not impressed" others. I have enjoyed working in with Faith Kernel Events and the children's contribution to the services.

### **Pastor Visiting:**

While I have been doing "visiting" based on invitation or as needs arise. Some people assume the pastor will automatically visit **without** having to be asked.

**Our Safe place policy** says pastor should not normally go and visit alone where females (alone at home) are involved or where children are alone. So when the new pastor comes, if you would like a casual visit, ask. If you have a specific need for a visit, ask.

### **Church Organisation and Direction.**

I have found working within the Church Council, Spiritual Ministry Team and the Future Focus Group, stimulating, helpful and people have been sincere in their roles. Remember that the Future Focus

Group is open to anyone to attend. Also leadership positions are annually open for election, and so variety / style of leadership is the result of the members decisions to participate or not, and to make themselves available or not. So in that sense you get what you yourselves decide to have. Personally I think your leaders have done their best leadership wise, within the given circumstances.

Other groups such as Women's Fellowship and Small Group ministries have a surprising influence on the direction and nature of the congregation through active and passive involvement, especially in "the big picture" things, and through the volume and nature of their own (Group's) activity. And so it is hard sometimes to get momentum in various "projects" because the real (effective, rather than the official) leadership of the congregation is quite diverse and sometimes not accountable to the central planning groups. In some ways that diversity is really good, but in other ways it can be tough to make those changes that will benefit the long term prosperity of the congregation.

I am truly grateful for the opportunity to serve this congregation for about 7½ years, and I wish all the members God's richest blessing in the future, including your new pastor and his family.  
Christian greetings,

Pastor Les Pfeiffer

## CHAIRMAN

Maybe if we could make our worship more inspirational, build solid discipleship practices, support children & youth ministry, and get everyone into small groups, then our congregation will grow and be successful and a great future will follow!

I have found out that trying to achieve this today is about as easy as herding cats. (If you want to see something hilarious, check out the Youtube video 'Cowboys Herding Cats'.) What I discovered is what is already known about cats.

- Cats don't have owners they have slaves
- They are highly resistant to alignment, especially when there are few incentives
- You can train a dog to obey you in ways that you can't train a cat
- Cats have attitude & self-respect
- Cats are leaving the building
- You can't herd cats!



*Are we there yet?*

So having problems with cats, back in May 2011, I and a few others decided to attend the SA/NT District Conference in Murray Bridge to find some answers and about herding cats. We also discovered that the old maps and methods we used for growing a church don't work and in fact only get us lost. Just trying harder also doesn't work. We found out though, that many others faced the same issues and we were inspired by the presentations and practical examples of how other congregations had made steps to engage their communities.

Things are changing at a greater rate than we are capable of adapting to! There are no sure-fire programs and no magic bullets. We live in a fluid networked society.

But God is at work here as everywhere else and we must get close, listen and fulfil His plan. When I look back this past year I see the handprint of His Holy Spirit everywhere; in the faces of the Spiritual

Ministry Team as I receive communion, in the everyday actions and contributions of congregational members and in the simple generosity of spirit and care amongst our members.

If we needed any evidence of the blessings which have flowed during the year, we need look no further than the air-conditioning units on the walls. This came quite unexpectedly from Neville McMullen at Nordic who convinced Mitsubishi to donate 5 brand new split-system units and also installed them for free. We thank them and Neville's workmen who spent all of a Saturday installing and testing the units with just a little help from a few of us. God must have a plan for this congregation.

During the year, Pastor Les accepted the call offered by the Kapunda Parish and in the usual pre-call process we were strongly encouraged to form a Parish and join with Trinity congregation at Pt. Augusta and St. John's at Wilmington. This was the only means by which we could accept a pastor from this year's group of graduates of Luther College. It meant also a significant increase in our financial offerings and the requirement to purchase a new manse.

Late in the year I asked for an indication of whether we could manage a commitment of an extra \$250 per week in our offerings as this is the amount required to meet potential LLL loan repayments on a loan of \$130,000. I was encouraged by the result that Sunday as members were able to pledge over \$200 pw. This was significant as the \$250 needed only to be raised on a Parish wide basis.

Subsequently on the 23<sup>rd</sup> December, negotiations were completed to purchase the new manse at 54 Billing Street, Whyalla Playford.

We are equally blessed by the fact that the LCA saw fit to appoint Pastor Jade Bauer to the Whyalla Parish. This meant that we effectively had no vacancy at all, a quite unusual occurrence in these times. We look forward with anticipation to his style and pastoral leadership.

Finally I would like to thank Pastor Les for being the 'man of his time' for this congregation. Pastor Les arrived here nearly 8 years ago on the understanding that we needed someone to guide us through the changes we needed to make, both inwardly and outwardly. Einstein once said that "the definition of insanity is to keep doing the same thing over and over and expecting a different result." None of us are Einstein's of course but we did understand the principle and Pastor Les was the driver through the change process. Out of the discussions and congregational meetings which followed, we developed a plan and the 'Continuing Adventures' booklets created for reference. Now is probably an appropriate time to re-read this.

Many new programs have been instigated during Pastor Les' time, particularly Faith Kernel Events, Corner Café, and Home Communion and we have appreciated his passion, dedication and spiritual guidance during his time here. God bless both you and Kathy in your new Parish.

Keith Sichler  
Chairman

## **FUTURE FOCUS GROUP**

This group is simply a group interested in the future of our congregation. No elected membership, no power to make decisions, only discussion and recommendations. The group meets on the last Monday of each month. Discussions are lively and thought provoking. Einstein once said that "the definition of insanity is doing the same thing over and over again and expecting different results." No Einstein's in the group yet, but we are always looking at doing things differently.

## **SPIRITUAL MINISTRY TEAM**

Gday all. The Spiritual Ministry Team has been meeting on a monthly basis, plus regular non formal contact as needs arise. We have been happy with the congregation's involvement in letting us know of any issues that they are aware of that require SMT input. All the members of the congregation are actually members of the SMT, as we all have a role to play in the spiritual health of the congregation, our Pastor and his family and the entire community.

We have been blessed by the 7 years of service from Pastor Les and Kathy and wish them all the best for the new challenges in Kapunda. Now we look forward to the installation of our New Pastor. We look forward to being of service to Pastor Jade, Cher and Family. We give thanks to God for the opportunity of having a new pastor soo soon after Pastor Les leaving.

For this year we will try to make sure that the dates of the SMT meetings are in the bulletin before the meetings, so if there are any special requirements, please contact Judith, Annette or me.

We expect the meetings to be the 3rd Monday of the month beginning in March and will be listed in the Church Calendar.

Yours in Christ  
Michael Simpfendorfer.

## **WOMEN'S FELLOWSHIP**

When I started to think about what I was going to put in my report I said to myself "how can I start this report so that it is not the same every year?"

I always seem to start how we have been blessed over the past twelve months.

On reflection it does need to be said again. Our Heavenly Father has truly blessed our small band of women who regularly attend meetings and willingly give their time in various ways.

Pastor Les gave us some interesting short talks on various topics. These were informative and at times thought provoking. Meetings that are set aside for formal bible study are not well attended however we try to make the program for the year as varied and interesting as possible. We had a guest speaker from the McGrath Foundation (breast care nurse) and Whyalla Aged Care. At our "bring a hat "meeting we saw a variety of hats both old and modern and our "show and tell" meeting was again very popular with ladies showing us all sorts of treasures. One meeting we had a chat after the meeting and this gives us a chance to know each other a little better. In September we made the decorations for our Christmas Tree Display.

Some of the ladies were kind enough to allow us to hold meetings in their homes during the winter months. Our final meeting for the year was at Des's home where we shared a meal and after the meeting we sang some carols.

Other activities included packing birthing kits, making mini pizzas, catering for the Thomas Heywood concert and the Lobethal Harmony Choir, carol singing at Copperhouse Court and Amaroo. We had planned two three course luncheons but lack of support meant that we were unable to do so.

We hosted the Combined Churches Advent Service which was well attended.

Our projects were Salvation Army hampers, church carpet and Fistula treatment for women in Africa. The mite boxes go to Lifeline.

As we start another year it would be wonderful if other women in our congregation came along to our meetings. May be “a meeting “sounds boring but the fellowship and activities make it a wonderful way of serving out Lord.

Pauline Jones

## POSSUM POUCH GROUPS

G'day all. The interest and commitment to the Possum Pouch groups by the congregation has been very disappointing. There are 3 groups “active” in the congregation. One group is perhaps leaning more towards a Bible study group and another group is perhaps the “next wave” of the support group. These 2 groups are full filling a function and for that we are very grateful, but the Possum Pouch philosophy is the vertical integration of people of various age groups involved in the groups.

So that leaves us with 1 group in the entire congregation that tries to fulfil the Possum Pouch philosophy. Unfortunately that group is feeling quite lonely and alienated, wondering why they are the only ones participating. This has limited their exuberance to embrace the change and give it a real go. Remember, if we keep doing the same things, we will keep getting the same outcomes. Is this what we want?

What's behind Possum Pouch Group activities is to.

- Have Fun and grow together.
- Help Members explore their own faith, grow in their faith, pray with and for other people in a one to one situation, or in a small group situations within a supportive and understanding setting.
- To help members become more confident in sharing their faith with one another and eventually with non-Christians as situations arise with in a supportive and understanding setting.
- To help the members support the congregations ministry with prayer.
- To help members relate their Christian faith to their own personal and family life e.g. helping our children to keep the faith they are baptised into.
- To help members encourage and empower fellow members to be involved in the day to day life of the church e.g. using their talents and interests in situations they come across.
- To help members who expressed a desire for closer, more personal worship and sharing opportunities, not because they are good at it, but because they want to be part of such situations.
- To help members who express a desire for making the Bible a tool for real life situations

They are a celebration of Congregational life. The purpose of the small groups is to

- assist the congregation to fulfill its mission and goals,
- help individuals grow in their faith and commitment,
- provide care and support for each other,
- motivate members in Christian living,
- assist in assimilating new members into the congregation and giving them practical personal Christian supports.



Possum Pouch Groups have a vertical structure, a cross-section of ages in each group, to give it a family structure. So everyone from the oldest, to the youngest can have some input. This is one of the greatest strengths that St James has, because we have soo many old people who know soo much, and can share this with others, if they wish to!

If you have any interest in these groups, please contact me and I will be happy to run through the possibilities, with no obligation. All that is necessary for the triumph of Evil is that good people do nothing!

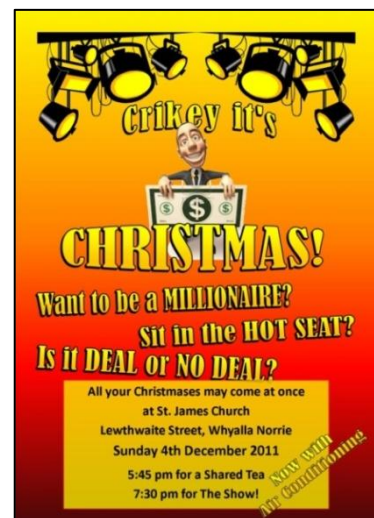
Yours in Christ,  
Michael Simpfendorfer

## CHRISTMAS PROGRAM

Each year we produce an annual Christmas Program to tell the story and celebrate the birth of Jesus. This year the program was a parody of the TV quiz shows and was developed from concepts devised by Alex & Owen Taylor. The script and Quiz Show PowerPoint format was developed in conjunction with Chris Jaensch who also took on the role of Producer. Add the hard work of the support crew, a talented cast and a dash of music by the Band and voila, instant Christmas Play 'Crikey It's Christmas'.

Thanks especially to the cast and crew for so many fine performances over the years; a lot of laugh's and always delivering the true meaning of Christmas.

Keith Sichler



## SHED MEN

Shed men is an opportunity for men to discuss issues from a male perspective and share our stories and faith. This year we visited a few new sheds and added a couple of new members to the group. Thanks to Steve Murphy who keeps the program active.

Keith Sichler

## DOMESTIC ENGINEERS

These informal gatherings are for women, and occur most Friday's. Pastor Les dares to join this group most Fridays. This group enjoys good food, good fellowship, and lots of laughs.

Discussion topics range from our personal day to day happenings to events on the local, national and international stage. Over the years many ideas to enhance our congregational life and worship services have come from discussions at Domestic Engineers. Pastor usually had an answer to some of our curly questions.

A group that is definitely 'young at heart'; but slightly older in other places. To find out where we plan to meet from week to week, the Sunday Bulletin is a good place to start.

Marilyn Sichler.

## FAITH KERNEL EVENTS

*The Bible Song principle: "To connect parents and children with each other and the Bible every night in every home and every week in every church."* The Bible Song Mission

During 2011 we have had a number of children attend Faith Kernel Events and it has been a pleasure to get to know these children on a deeper and more meaningful level. The questions that the children ask can be quite challenging however the discussions that have resulted from these questions have been very enlightening. We have had some very interesting discussions on the Cultural Revolution in China and Apartheid in Africa to name two that I can remember.

In October I was fortunate to attend a week long training lead by Faith Inkubators Australia. All of my expenses were provided for which was a blessing, however the true blessing was the opportunity to receive the training and to meet other Australians and American who also use this material and are committed to helping their children learn and understand about God, Jesus and the Bible.

Items that I have brought home from the training are

- The importance of using all of the material
- The learning process that occurs when the material is used
- That I don't have to do the entire Event in one session

FKE enables

- Children to learn the bible stories and text through art, music and movement.
- Children to freely share their lows and highs in a respectful atmosphere.
- Children to learn to pray.

FKE is an Event for children aged from 5 to 12. It uses a power point presentation on a Sunday morning to teach the children the books of the bible, bible texts and bible stories. The songs are often lively while the bible stories are written in a language and drawn in a style that is relevant to that age group.

Part of the program is Art Attack time. This is an opportunity for the children to use their creative juices as well as discuss their lows and highs for the week, create their own prayers and bless each other. The children are encouraged to continue this blessing ritual at home.

The church congregation is also included in the program when the children present something of their Art Attack time during the worship service as their offering. This could be by singing a song, performing a drama, leading a prayer or simply by having their photos displayed during the service.

We pray that by offering this program to families, these parents and children will come to know Jesus as their Saviour and friend.

A big thank you must go to our helpers.

Yours in Christ  
Chris Jaensch

## SUPPORT GROUP

The Support Group continues to meet each fortnight on a Monday morning always with Devotion and prayer. We mostly have a good and encouraging attendance. Sickness is the only deterrent. We have been blessed to enjoy wonderful fellowship and lots of fun.

Last year, 9 of our members celebrated "special" birthdays and because there were so many, it was decided to combine the celebrations with the end of the month luncheon at Roopena instead of separate lunches on or near the birthdays. Our oldest members were Eileen Hamlyn and Stella Schuppan, both 90 and the youngest was Pastor Les' 60th. With Stella's birthday, we went to the Annie Lockwood Court and celebrated there. She was very happy. Congratulations were also offered to Brenda and Dudley Anderson on the occasion of their Golden Wedding on 7th October.

We did have a couple of sad occasions when two of our former members, Ruth Zimmerman and Dudley's sister, Dulcie Holmes passed away after long illnesses.

We still enjoy our end of month lunches at Roopena and it is a joy to have other members of the congregation join us. Everybody is welcome to come along anytime.

Another angel, which has been named Gabriel, was made to compliment the other angel in the Church and again the work was done mainly by Pastor Les, Anne Schuppan and Dorothy Traeger and some helpers.

We were able to send a donation of \$100 to the Lutheran World Service for the famine appeal in Somalia, Africa and supported the Bible Society.

Programme activities included

- Hosting the Bible Society morning tea in our hall,
- Simon Schuppan talked to us about Disabilities S.A., about what they do and how they care for their clients.
- Kathanna Bollen told us all about Bowen Therapy.
- Outing to Maralyn and Colin Barratt's shack at Black Point.
- Updated the Support Group photo album.
- Catherine Balfour-Oglivy, who gave very interesting information about Aged Care and distributed booklets and brochures. She also told the history of her previous employment.
- Visit to the Arid Lands Botanical Gardens at Pt. Augusta, which included 2 people, each in a wheelchair.
- Visit to the Mt. Laura homestead.

Another year was brought to a close with a Christmas dinner at the Roopena Football Clubrooms with an invitation to all Church members and friends to join us. 30 people attended.

We give grateful thanks to God for His continuing blessings on us all.

Peggy Brereton.  
Secretary.

## CHURCH CAMP

We all had a great time! You should come!

Keith Sichler

## **SUNDRY REPORTS**

### **Pipe Organ Concert**

Arrangements were made for Thomas Heywood to perform a Grand Organ Spectacular concert on Sunday April 17<sup>th</sup> 2011 at 7:30 pm in the Church called 'Top of the Stops'. This was also the 32<sup>nd</sup> Anniversary of the pipe organ, 1979 – 2011. This concert was enjoyed by over 105 people and Thomas has promised to return in 2013 at a time suitable to both parties.

### **Lobethal Male Choir**

The choir performed a concert on Sunday June 18<sup>th</sup>, 2011 at 7:30 pm in the Church and also sang during the Sunday morning service at 10:30 am. During the concert, we also had the privilege of several other local artists who performed several items which were well accepted by everyone. These artists were Mark Tempany and Alison Hams and also Dr. Hemant Patel. Accommodation and meals were arranged for the choir and they were very appreciative of all that was done for them. My thanks must go to all who helped in any way especially to the people who accepted various positions during my absences in Adelaide for treatment. It is planned for the choir to give us a return visit mid-year 2013 or failing this an alternative choir could be researched.

### **Church/Hall Electrical update**

The upgrade is complete; all major work in both Church and hall is now completed. A major fault in the electrical system in December caused problems which affected 40% of the system. Using the services of my neighbor, a qualified electrician, it was found that we had lost one of the 3 phases (Red) out of service. ETSA Utilities were called and had to replace the main box on the pole in the laneway, the connection box under the eaves at the back of the church and the main cable from the pole to the church. The Emergency Lighting system has been checked every 4 months as required by law.

### **Organ upgrade**

This was unable to be carried out prior to the Thomas Heywood concert due to floods in Victoria causing damage to the tube supplier's factory. The tubes were delivered to our organ builder, Richard Larritt, in late September and were installed in early November. This addition has improved the overall sound when the tube system used is well above expectation and has proved to have been well worth the effort to achieve the grant from Community Benefit SA. My thanks go to Con Theologou for all of his assistance in relation to grant application and reports. Much appreciated.

### **Church Garage**

New door installed at north end of garage and old door east side removed and area re-sheeted. Garage cleaned out and furniture items removed from CE House to garage. Door and timber was a donation from Eric McLean.

### **Church Bell**

Bell was removed from tower, overhauled and bell cleaned back to the original surface. Frame work fabricated and installed at second window level above main entrance. The bell is now enclosed out of weather and vandals and is operated from within the church near entrance door. Handle yet to be made and fitted.

### **Old Manse**

Old Edwards solar hot water system removed from roof and a new Quantum 340 litre heat exchanger system installed in back verandah area.

## Other

Fire extinguishers tested and passed in July.

## Outstanding work.

Mesh covers over air conditioner units on west side of church. Replacement/repairs of all lawn sprinkler units and flush-out of lines. Replacement of toilet bowl in old manse.

Jim Havelberg  
Coordinator/Projects/Research

## Church Air-conditioning Project

Following installation of the air-conditioning system in the church hall in 2010 we were again approached by Neville McMullen who sourced 5 brand new Mitsubishi split-system air conditioners and was prepared to donate and install them in the church. With a little help from some congregational members, Nordic staff installed the units on 6<sup>th</sup> August 2011. Our sincere thanks go to Neville McMullen and the staff at Nordic whose community spirit is very much admired. Overall the saving to St. James is estimated at over \$20,000. An outstanding result and an indication of how truly blessed we are.



*The men from Nordic.*

## STATISTICS

Attendance (Avg)	2011	2010	2009	2008	2007	2006	2005
Total Attendance	41	49	51	49	54	57	62

### Notes:

52 services had statistics recorded with an average attendance 41 people. An average of 25.4 people attended communion on each of the 29 times communion was held. There were 23 non HC services.

We have 65 Communicant members who attended 2 times a year or more, plus 15 Home HC members

Our Total communicant membership is 80 members, of whom 59 are 18 yrs. and older and attended 2 times per year or more) plus the 15 who commune at home. Our total communicant membership (18 years and older) that we use for quorum calculation is therefore 74 members

Corner Café averaged 44.4 (3.4 higher than the average attendance).

During the year we had 8 baptisms, 4 funerals, 2 weddings and 1 transfer out.

Compiled by Pastor Les

## 2011 FINANCE

<u>INCOME</u>	\$
Offerings	\$57,375
Pt. Augusta/Wilmington	\$11,167
Bank Interest	\$86
Hall Hire	\$5,393
Private Photocopying & Phone calls	\$73
Services	\$895
Sundry income	
Fundraising	\$7,162
Retiring Offerings	\$566
Appeals	\$353
Faith Kernel Events	\$146
Devotion Books	\$80
Camp	\$1,005
	\$9,313
Total Income	\$84,302
<u>EXPENSES</u>	
Salary & Allowances	\$61,051
Employers Superannuation G'tee	\$5,265
LCA Funds Levy	\$1,480
Church Plant	
General Maintenance	\$422
Cleaning Supplies	\$197
Electricity	\$2,423
Emergency Services Levy	\$135
Insurances	\$3,235
Postage	\$419
Telephone	\$279
Water Rates	\$1,029
	\$8,139
Manse	
Rates & levies	\$837
Water Rates	\$1,262
Maintenance	\$3,231
Insurance	\$578
	\$5,908
Ministry/Programs	
Advertising	\$396
Congregational Life	\$303
Faith Kernel Events	\$642
Photocopier	\$269
Pastors requirements	\$24
Stewardship	\$10
Subs – Devotion Books	\$60
Trinity Haven Camp	\$498
Donation (Amaroo)	\$100
	\$2,302
Total Expenses	\$84,144
Operating Profit	\$158
Bank Balances as at 31/12/11	
Operating Account	\$6,691
LLL	\$8,000
Total Funds	\$14,691

# 2011 AGM MINUTES

Postal Address:  
P.O. Box 8,  
Whyalla S.A. 5600

**WHYALLA**



**S.A.**

Manse:  
9 Russell Street,  
Whyalla Norrie 5608

Church & Hall  
Lewthwaite St. Whyalla Norrie 5608

## Minutes of Annual General Meeting held 20/2/2010

a) **Opening:** Keith welcomed members to the 2011 AGM and declared the meeting open at 11:26 am.

b) **Attendance:**

Steven & Judith Murphy

Brian & Peg Brereton

Anne Schuppan

Annette Waters

Suzanne & Robert Freund

Chris Jaensch

Trevor & Dianne Zimmermann

Pam Strawbridge

Jim & Daphne Havelberg

Ian McArthur

Rhonda Jenkins

Dorothy Traeger

Janette Davies

Des Theologou

Alan & Pauline Jones

Michael & Leeanne Simpfendorfer

Mary Simpfendorfer

Jasmine Simpfendorfer

A Kroschel

Rohan Wittwer

Pastor Les Pfeiffer

Marilyn Sichler

Keith Sichler (Chair)

Con Theologou (Minutes)

c) **Apologies:**

Paul & Ali Zimmermann, Rolf & Judy Wittwer.

d) **Minutes of Last AGM:** 14/2/2011

1. Amendments to the minutes of the previous AGM

No amendments were identified.

2. Minutes of the previous AGM

Jim Havelberg moved that the minutes of the AGM held on 14/2/2010 be accepted as a true and accurate record, second Dianne Zimmermann, all in favour.

3. Business arising

- i. Item 4.4 Common Email Account – The congregation now has a common email account which many people are using to communicate with including submitting bulletin items. The email account is predominantly used to distribute electronic copies of the weekly Bulletin to those people who have registered an email address with the Bulletin Crew. In addition we also now have a web site that is active and provides a large range of information to the congregation and wider community at large.

**e) Reports – As tabled:**

1. Pastors Report – Pastor Les Pfeiffer

Pastor Les elaborated on the following items from his report.

- i. Thanked the congregation for the time and effort that has been put into the spiritual development of our congregation.
- ii. Identified 2010 as a period of significant change for the congregation. Discussed aspects related to our mission and the spiritual influence our activities have on the wider community we interact with, i.e. Our Mission Front (Zone). Pastor Les spoke about our internal and external based activities and their potential to assist our mission. Refer to appendix 1.

2. Presidents Message – Keith Sichler

Keith thanked Pastor Les for being the congregation’s spiritual conscience and guide in 2010. Keith also thanked the many people who have helped and supported the congregation with their generosity and time throughout the year.

3. Future Focus Group – Pastor Les Pfeiffer & Keith Sichler

Pastor Les discussed the structure, membership and objectives of the Future Focus Group. He then spoke to examples of the sort of things that are discussed by the FFG, refer to appendix 2.

Keith elaborated on the circumstances that lead to the formation of the FFG (cited the document “The Continuing Adventures of Saint James). Keith then identified the hard facts that face our congregation, refer to appendix 2.

Brian Brereton raised an issue from the previous Synod report in relation to giving money to the District body. The point was raised in relation to comments made about the survival of our congregation. It was noted that the Whyalla congregation has not contributed to the District for the last 5 years (approximately). Brian reminded the meeting that we are also members of the wider church and that we have an obligation to, and need to support the giving of funds to the wider organisation so that they too may meet their objectives. It was noted that Whyalla’s past performance has not been good and that there are smaller congregations that are giving money to support district. This makes Whyalla’s efforts look very poor. In response the question was asked how we might achieve this – where would the money come from. Our declining numbers create problems for us to find additional funds for District.

4. Possum Pouch Groups – Michael Simpfendorfer

Michael highlighted the last paragraph of the PPG report and indicated that if anyone has any interest in these groups they should contact him to discuss the possibilities, with no obligation to continue.

5. Shed Men – Steven Murphy

Steven gave an overview of shed men and how it is progressing. Identified the need to look at the reasons why more members of our congregation are not attending shed men. He also challenged the congregation to consider more, the needs of our young people. He asked us to think about what we can do to engage these people. He asked the members present to put the congregational needs before their own needs in relation to the future growth/survival of our congregation.

6. Other Reports – Jim Havelberg

Jim spoke about several changes and forthcoming concert events.



- i. Thomas Heywood will be visiting Whyalla on the 17<sup>th</sup> April 2011.
- ii. Mark Tempany and Alison Hams are planning quarterly concerts in the church.
- iii. Lobethal Choir will be visiting in June 2011.
- iv. Jim thanked Alan Jones and Bob Freund for their efforts in the refurbishment of the CEC in preparation for Mark Tempany and Alison Hams occupancy.

7. Finance – Rohan Wittwer

Rohan drew the congregation's attention to some specific issues:

- i. We have an operating loss of \$4,000 for 2010
- ii. The LLL account money is not our money but funds lent to us. Therefore we need to be vigilant regarding our income and expenditure.
- iii. Things we have done well:
  - o Electrical upgrade complete and under budget
  - o Air conditioning for hall at no cost
  - o Grant to make the pipe organ the flashiest in county SA
  - o Lots of work going on to ensure long term spiritual survival
  - o \$1609 from retiring offerings donated to Amaroo lodge
- iv. Things we have not done so well
  - o Financially we are going broke
- v. Budget Items
  - o Pastors pay of \$61,662 inc Car allowance, Travel allowance for Whyalla & Pt. Augusta/Wilmington
  - o Superannuation guarantee \$5,952
  - o Church upkeep- \$9,300
  - o Manse upkeep-\$2,700
  - o Church programs- \$2,200
  - o Total required to keep the show on the road \$85,300
- vi. Income for 2011
  - o Offerings \$61,000
  - o Contributions Pt Augusta/Wilmington \$10,000
  - o Fundraising \$9,000
  - o Hall hire \$3,000
  - o Special events \$2,500
- vii. Jim Havelberg indicated that an additional amount of \$25 per week rent will now be coming in as a result of Mark Tempany and Alison Hams renting the CEC. It is expected that arrangement will bring in an additional \$1,200 per year (approximately).

8. Funky Faith Feeders – Chris Jaensch

Funky Faith Feeders, our churches program for the teenager group in our congregation, commenced part way through 2010.

We have a number of people who regularly attend and who sometimes bring their friends along.

The sessions were held on Sunday afternoons, as this suited the children best. As teenagers we find that they have many commitments so it was great that we could find a convenient time for them all.

The Faith Inkubators material, head to Heart, is being used as a resource. The event uses a PowerPoint presentation with catchy songs and games. Other material provided enables the leader to present the theme of the day with a meaningful exercise or two. A "Head to Heart" event is used at every second event.

At other times the event is alternated by having a Fun Sunday or a Serving Sunday. Service to date has been to the Church in the form of church cleaning and preparing to do the artwork on some table tops.

We ask that you pray for this group of young people and leaders.

**f) Election of Office Bearers**

1. Elected Positions – Keith declared all positions vacant. Nominations list distributed. Pastor Les supervised the call and vote for elected positions.
2. Appointments and Ratified Positions – Keith stood as elected chairman and supervised the nomination of appointments and ratified positions. All nominations accepted and ratified by the meeting. Refer to appendix 2.

**g) General Business**

1. Church Times

Church Council resolved to keep the existing church service times as they are currently scheduled. Corner Café was considered to be moved to the first week in each month however after discussion it was agreed that CC will remain on the 4<sup>th</sup> week of every month. Faith Kernel events were also considered an issue given the low attendance numbers. It was agreed that further promotion of this event needs to be done in 2011. The Faith Kernel events will remain in place on Sunday mornings prior to the church service.

The scheduled meeting for the 8<sup>th</sup> March 2011 is in place to resolve/vote on church service times. It is a congregational forum to look for solutions to the various issues we are faced with. Pastor Les suggested we have a straw vote to see if the meeting is wanted. Dianne Zimmermann moved that the 8 March meeting proceed to see if there are any solutions to the issues discussed above. The vote revealed that 5 people are interested for the meeting to proceed. It was decided that the meeting go ahead.

**Close:** Meeting closed at 1:00 pm.

**Appendix 1 – 2011 Nominations List**

<b>Elected Positions</b>		<b>Moved</b>	<b>Second</b>
<b>Chairman</b>	Keith Sichler	<i>Annette Waters</i>	<i>Brian Brereton</i>
<b>Vice Chairman</b>	Chris Jaensch	<i>Marilyn Sichler</i>	<i>Di Zimmermann</i>
<b>Secretary</b>	Con Theologou	<i>Di Zimmermann</i>	<i>Jim Havelberg</i>
<b>Spiritual Ministry Team</b>	Michael Simpfendorfer Annette Waters Judith Murphy	<i>Meeting</i>	
<b>Stewardship</b>	Andrew Schwenke	<i>Jim Havelberg</i>	<i>Marilyn Sichler</i>
<b>Property Coordinator</b>	Bob Freund	<i>Con Theologou</i>	<i>Marilyn Sichler</i>
<b>Auditors</b>	Grant Jeffery Con Theologou	<i>Trevor Zimmerman</i>	<i>Dorothy Treager</i>
<b>Treasurer</b>	Rohan Wittwer	<i>Annette Waters</i>	
	<i>Rohan withdrew his nomination in lieu of Marilyn Sichler's nomination for the role.</i>		
	Marilyn Sichler	<i>Chris Jaensch</i>	<i>Rohan Wittwer</i>
	<i>Proviso: Marilyn will not be signing any cheques.</i>		
<b>FKE Co-ordinator &amp; FFF</b>	Chris Jaensch	<i>Marilyn Sichler</i>	<i>Sue Freund</i>

The meeting voted in favour of all elected positions.

## **Appointments**

**Lay Readers.** Brian Brereton, Steven Murphy, Ian MacArthur, Keith Sichler, Marilyn Sichler and Dianne Zimmermann.

Grant Jeffery – provisional, based on previous interest shown. Grant to be approached to confirm

The meeting voted in favour of the appointments.